

MONTHLY MEMBERSHIP PROGRESS REPORT

LOCATION NEPAL

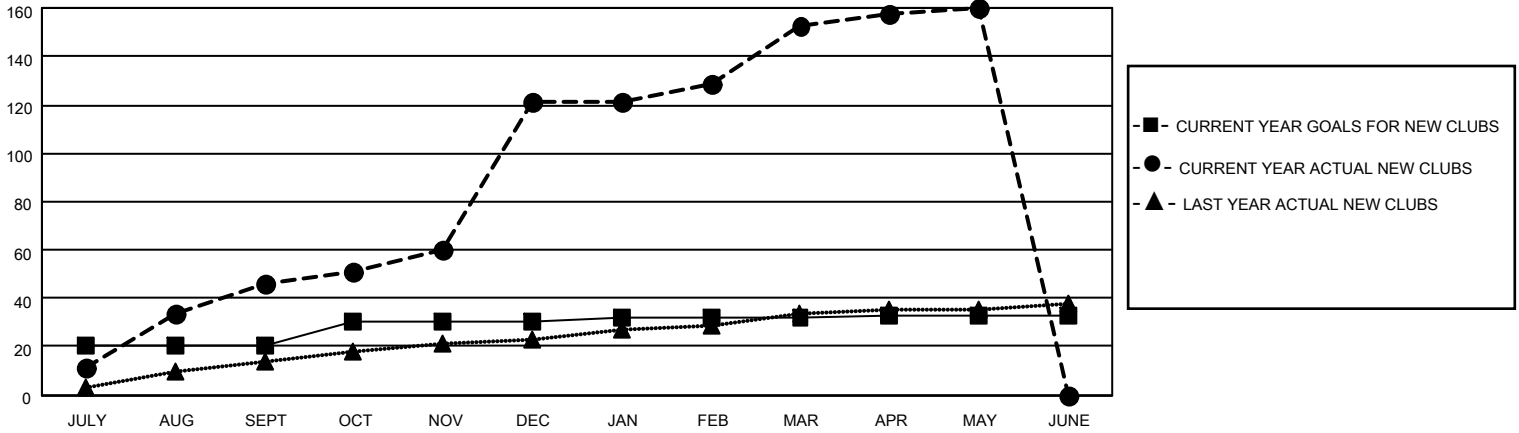
District 325B2

Results as of: 5/31/2021

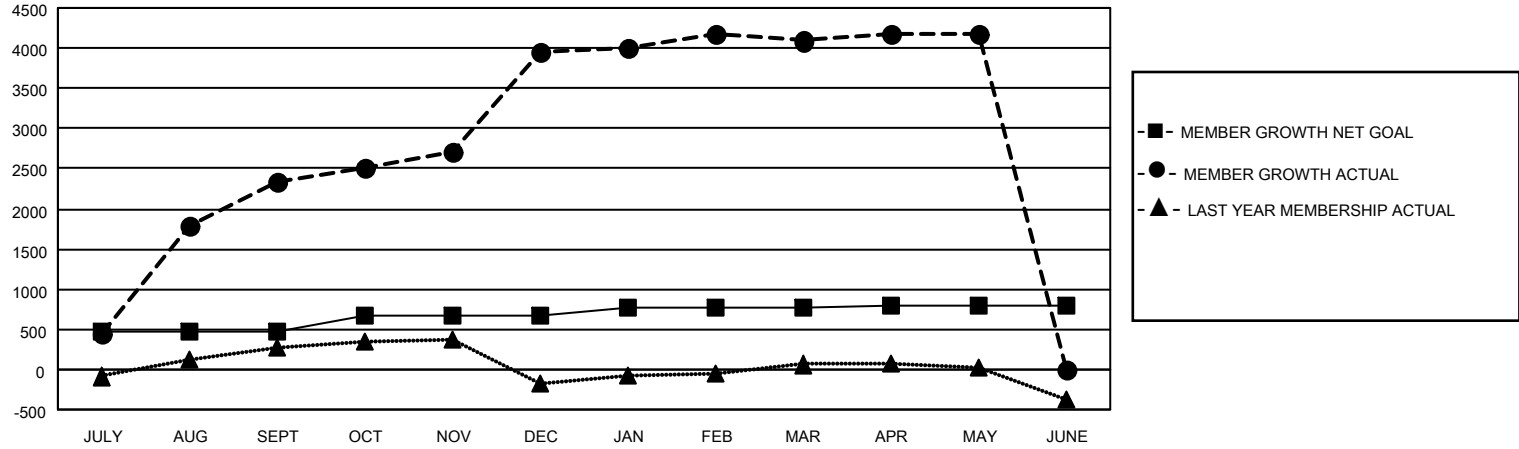
Clubs			
RESULTS FOR 2020-2021			
QUARTER	NEW CLUB GOAL	NEW CLUBS	DROPPED CLUBS
JULY/AUG/SEPT	20	46	0
OCT/NOV/DEC	10	75	0
JAN/FEB/MAR	2	32	32
APR/MAY/JUNE	1	7	0

Members			
RESULTS FOR 2020-2021			
QUARTER	MEMBER GROWTH NET GOAL	MEMBER GROWTH ACTUAL	DROPPED MEMBERS ACTUAL (including transfers)
JULY/AUG/SEPT	465	2582	221
OCT/NOV/DEC	200	1914	296
JAN/FEB/MAR	100	824	675
APR/MAY/JUNE	20	195	92

GOALS AND ACTUAL NEW CLUBS CUMULATIVE



GOALS AND ACTUAL MEMBERS CUMULATIVE



DROPPED CLUBS: 32	411 CLUBS OF 548 ADDED 1 OR MORE NEW MEMBERS	<p style="text-align: center;"><u>GENDER DISTRIBUTION</u></p> <p>MALE 9,288 (72.56%)</p> <p>FEMALE 3,512 (27.44%)</p>
<p style="text-align: center;"><u>DROPPED MEMBERS</u></p> <p>DECEASED 9</p> <p>CLUB CANCELLED 595</p> <p>OTHER 679</p> <hr/> <p>TOTAL 1,283</p>	<p>CLICK HERE FOR CUMULATIVE MEMBERSHIP DATA</p>	<p>TOTAL FAMILY UNIT MEMBERS 9,755</p> <p>FAMILY MEMBERS PAYING HALF DUES 6,235</p>